

# A DAY IN THE LIFE OF A FORENSIC PHYSICIAN

At the police station custody suite:

## 1 Apply universal healthcare values in relation to:



Fitness to be detained in custody  
Fitness for transfer to court, prison or another police station  
Fitness to be interviewed by police  
Fitness to be charged with an offence  
Fitness to be released  
Substance abuse, mental health problems, and/or physical and other medical conditions  
Assessing and documenting injuries  
Assessing those arrested for road traffic or other transport offences

Developing appropriate care plans (e.g. prescribing medication)

Treating or referring to other centres (e.g. Emergency Departments)

Liaising with teams for child and adult safeguarding, and drugs, alcohol and mental health diversion

Communicating clearly to custody officers relevant decisions about the detainee's management



## 2 Examine complainants or police officers



Take history, and document injuries  
Take appropriate evidential samples (e.g. blood samples, intimate swabs)  
Assess complainants of alleged police assault  
Assess injured police officers  
Examine those exposed to methods of restraint (e.g. Taser, irritant sprays, batons, police dog)

Away from the police station:

## 1 Write statements for court

At police station, at home or at other workplace



## 2 Examine victims of alleged sexual assault

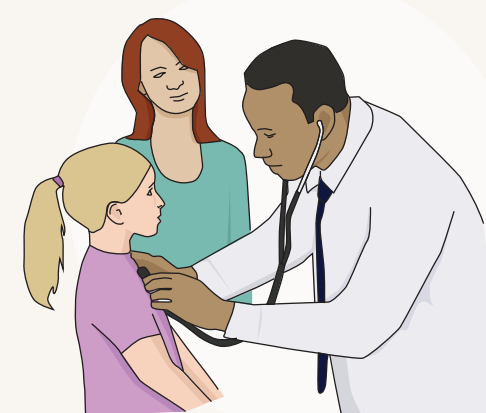
At a Sexual Assault Referral Centre or in hospital

- Assess
- Take samples
- Arrange treatment and further management



## 3 Jointly examine children and young people

Often with paediatricians – in connection with safeguarding, or child abuse issues



## 4 Give evidence in courts and tribunals

As a professional or expert witness

- Magistrates Courts
- Crown Courts
- Coroner's Courts
- Professional Disciplinary Tribunals

